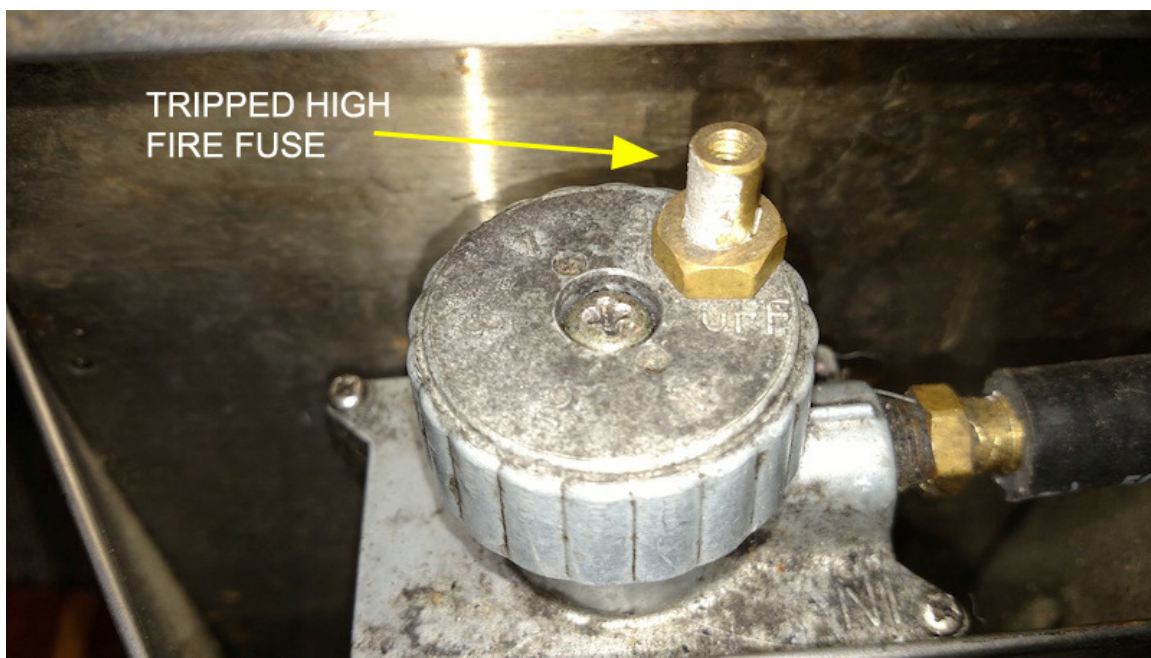


High Fire Fuse

The high fire fuse is located in the adjustment knob on the oil metering valve. The purpose of the fuse is to prevent the fuel inside the valve from overheating should the flame inside the heater drop inside the pot and begin heating the valve casing. Should the heat exceed 140°F, the solder inside the fuse will liquefy and the fuse will let go allowing the knob to drop down and shut off the fuel to the heater (see below).



If this happens then you have 2 options. Option 1 is to replace the fuse with a new one. To do this you would remove the old fuse by unscrewing the brass nut that contains the assembly. Then you would screw in the new fuse tightly and then calibrate your fuel flow.

Option 2 allows you to possibly re-use the fuse. Remove the fuse assembly as above. Once removed place it upside down on a hot surface such as a frying pan and allow it to heat up until the outer casing slides back down over the fuse. Remove it immediately and place it somewhere and allow it to cool. This method may only be used once or twice before there is not enough solder to hold the fuse in place.