

# dickinson MARINE

## Cementing a Stove

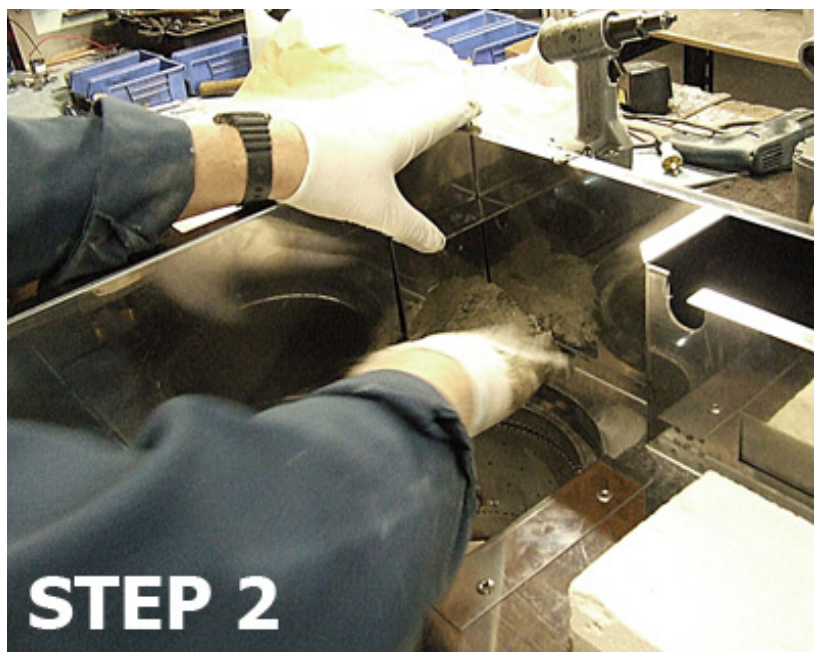
First you need to remove all the cement from the firebox. Just chip it out using a hammer and large screw driver. New cement will not bond to old cement.

Second you need to mix the cement add approx. 2 cups of water per 5lbs of cement.

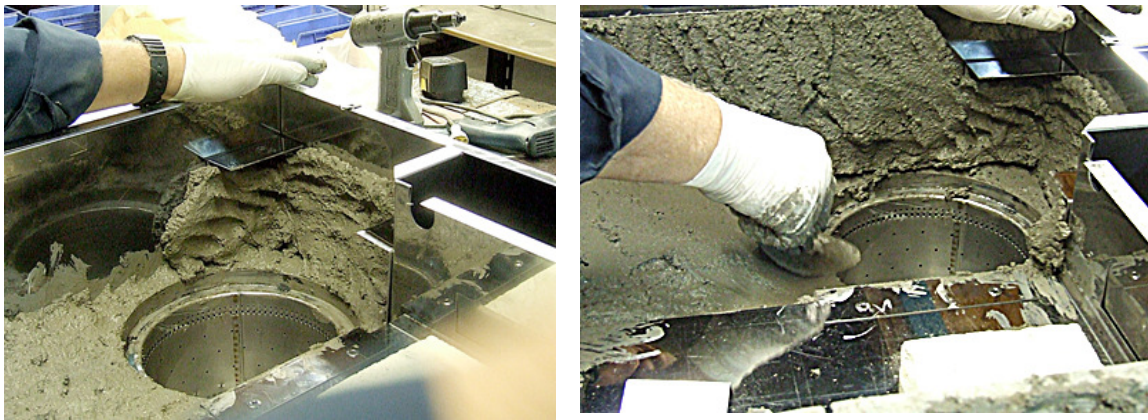
1. First make sure that all the clips are over the little stove-top holes on the stove top. There are 6 clips in total.



2. Next, start applying the cement to the stove, in the left hand corner. About half an inch thick.



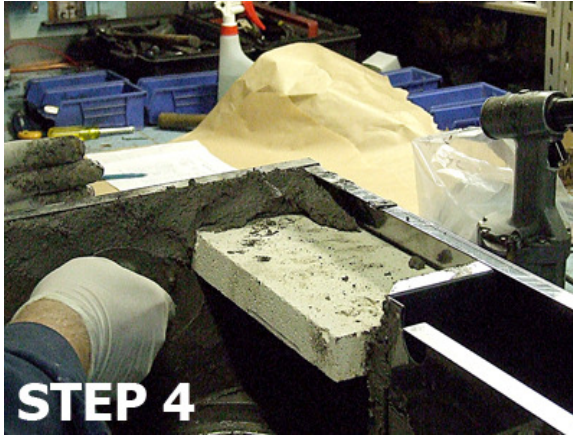
**2a.** Spread the cement around the stove evenly, about a half an inch thick, and use a trowel to smooth out the surface.



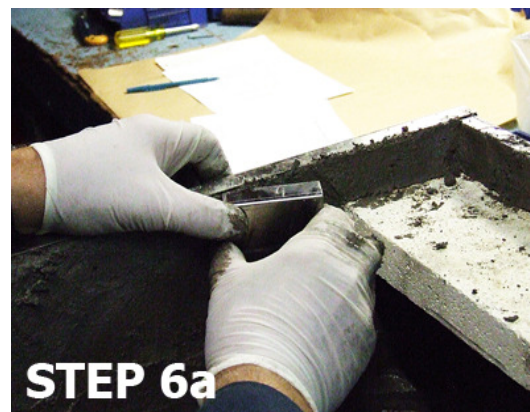
**3.** Now put the firebrick into place.



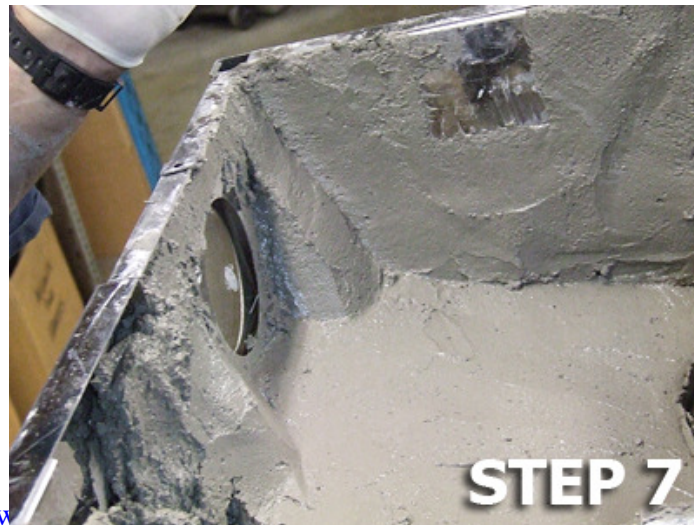
4. And apply cement all around the brick, making sure to fill all the cracks.
5. Use a trowel to smooth the cement.



6. Next, insert the two cement retainer brackets into the bottom left, about 4 inches apart, and blend them into the concrete.
- 6a. Then, insert the two top cement retainer brackets into the top left side, about 4 inches apart, and blend them into the concrete.



7. Next, fill in two thicker "columns" on each side of the window, as shown below.



8. Then finish the cementing, by filling in the front panel, as shown below. Make sure all the cementing has been smoothed out with a trowel.



### **Putting on the Top**

1. First put the Hybond Sealant along the top edge and smooth it out, as best as possible.



2. Then place the top on, slowly and evenly onto the stove. Screw down securely  
**\*MUST GO ON IN CORRECT POSITION VERY FIRST TIME**

